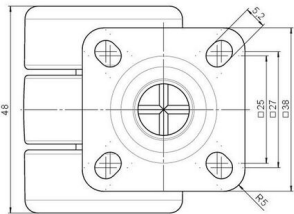
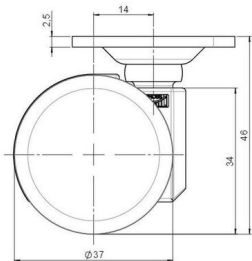


movetto 3 elegance

As of: August 16, 2025

|  |                      |  |
|--|----------------------|--|
| <b>Description</b><br>movetto 3 H elegance | <b>Model</b><br>D231 | <b>Carton Quantity</b><br>125 pcs per Carton |
|--|----------------------|--|



Technical Details

|                            |                              |
|----------------------------|------------------------------|
| Product Type               | Furniture caster             |
| Wheel diameter             | 37mm                         |
| Load capacity              | 70kg                         |
| Overall height with fixing | 46mm                         |
| <b>Wheel:</b>              |                              |
| Wheel type                 | Hard wheel                   |
| Wheel color                | RAL 9005 Jet black           |
| <b>Housing:</b>            |                              |
| Housing form               | unhooded, with neck diameter |
| Neck diameter              | 16mm                         |
| Housing material           | Zinc die-cast                |
| Housing color              | Shiny chrome                 |
| Mobility concept           | Freewheel                    |
| Fixing                     | 38x38mm Plate, 9,5mm         |
| Description                | DDZ 231 - 3 X 1              |

## Fixings

Compatible with the following available fixings:

### No-Noise™ Stem:

- 11x19,5mm with 11,4mm circlip
- 11x19,5mm with 110,6mm circlip

### Push fit stems:

- 10x22mm with 10,3mm circlip
- 10x22mm with 10,5mm circlip
- 11x19,5mm with 11,4mm circlip
- 11x19,5mm with 11,8mm circlip
- 11x22mm with 11,4mm circlip
- 11x22mm with 11,6mm circlip
- 11x22mm with 11,8mm circlip

### Threaded stems:

- M8x15mm
- M8x25mm
- M10x15mm
- M10x25mm

### Square plates:

- 38x38mm
- 55x55mm
- 60x60mm

### Caster cup:

- 120x104mm

### Caster module:

- 400x70mm